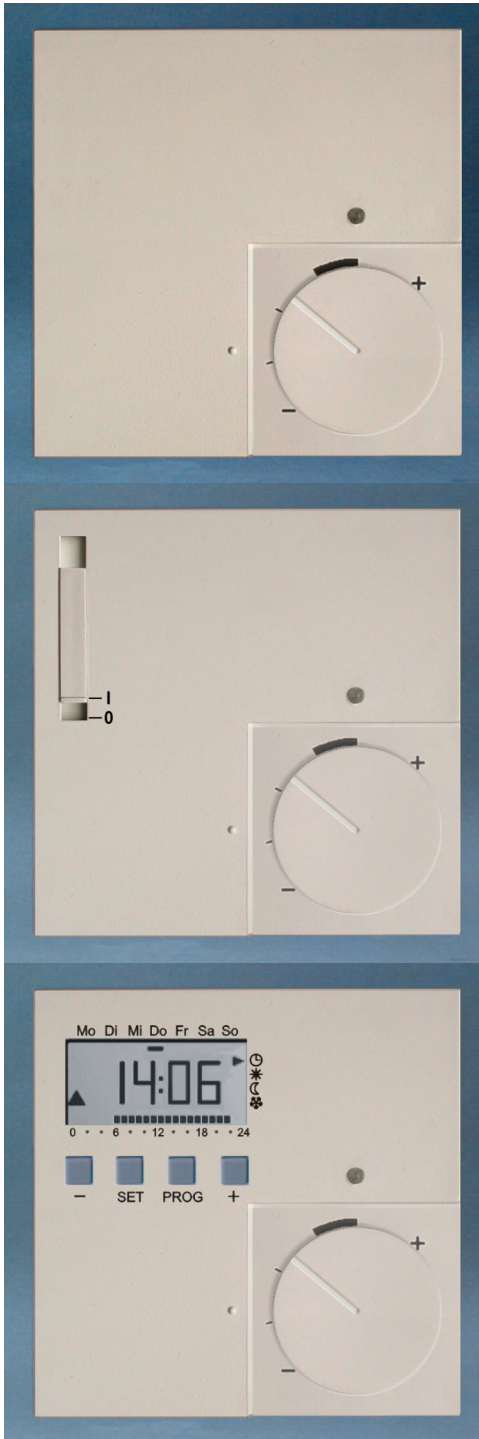


Room Thermostats Clock Thermostats



Types SF 20, SF 23, SF 29, SF 50, SF 200, SF 220



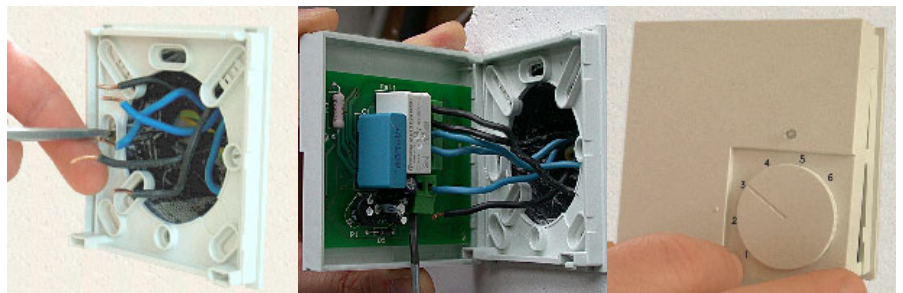
Application

- Warm water heating
- Electric heating
- Air conditioning

Versions

- Internal sensor and/or external sensor
- Triac output (noiseless)
- Relay output -potential free-
- Switch automatic / off (also: heating/cooling!)
- Relay output can be switched over to NO or NC function (advantage for stockkeeping)
- Same design of room thermostat and clock thermostat!
- Operating voltage: 24V or 230V
- Clock for heating and setback programmes (clock thermostat)
- Adjustment range limiter (all versions)
- LED for switching indication
- Customer versions on request**

Easy mounting in 3 steps



① Mount base plate
on wall box

② Connect wires

③ Snap in the
thermostat

Delivery Programme

Room Thermostats	Room Thermostats with switch	Clock Thermostats
<ul style="list-style-type: none"> • SF20.R10/1 • SF20.T/1 • SF20.T/1.I • SF29.T/1 • SF29.T/2 • SF50.R10/1 • SF50.T/1 	<ul style="list-style-type: none"> • SF20.R10/2 • SF20.T/2 • SF20.T/2.I • SF20.To/2 • SF29.T/2 • SF50.T/2 	<ul style="list-style-type: none"> • SF200.R10/1 • SF220.T/1 • SF200.R10/2 • SF220.T/2



Type	Triac (noiseless)												Relais									
	230V						24V						230V		24V							
	SF 20.T/1	SF 20.T/1.I	SF 20.T/1.S2	SF 23.T/1.S2	SF 29.T/1	SF 50.T/1	SF 220.T/1	SF 20.T/2	SF 20.T/2.I	SF 20.T/2.S2	SF 20.To/2	SF 29.T/2	SF 50.T/2	SF 220.T/2	SF 20.R10/1	SF 20.R10/1.S2	SF 50.R10/1	SF 200.R10/1	SF 20.R10/2	SF 20.R10/2.S2	SF 200.R10/2	
Technical Data																						
Temperature Range																						
comfort and lowered temperature	+5 ... +30°C																					
frost-prevention	+5 ... +10°C																					
limit temperature	+5 ... +55°C																					
Resolution of Temperature	stepwise 0,5K																					
Temperature Setback	2 ... 10K, adjustable																					
approx. 2K, fix																						
Outside Scale	plus -minus																					
Inside Scale																						
Sensor KTY	internal																					
internal and external	x**																					
internal or external	x* x*																					
Sensor Tolerance	max. ± 1K																					
Operating Differential	± 0.1 ... ± 1.3K adjustable																					
± 0.2K, fix																						
Operating Voltage	24V AC																					
230V AC																						
Lowering output	Triac (noiseless), not potential-free																					
Max. Current	0.5A, 24V AC																					
0.5A, 230V AC																						
Output	Relay (NO), potential-free																					
Triac (noiseless), not potential-free																						
Max. Current	0.8A, 24V AC																					
0.8A, 230V AC																						
10(4)A, 24V AC																						
10(4)A, 230V AC																						
Pilot-Function																						
Control-LED	heating on																					
Switch	automatic / off																					
heating / cooling																						
Connection of Actuators																						
max. 5 actuators																						
max. 10 actuators																						
currentless closed																						
currentless open																						
currentless open or closed																						
inverted by jumper																						
Week Time Switch electronic																						
Reserve Power	(refers to the clock, time programmes are stored permanently)																					
approx. 4 hours																						
32 Program Places	(max. 112 switching times)																					
Programming	4 keys																					
Default Settings	Mo-Su 06:00 heating																					
Mo-Fr 22:00 setback																						
Sa-Su 23:00 setback																						
Housing																						
Protectiv System	IP 30																					
Protectiv Class	II according to EN 60335																					
Weight	approx. 90g																					
approx. 110g																						

**) Remote sensor FK 133/4 included in delivery (for limited temperature)

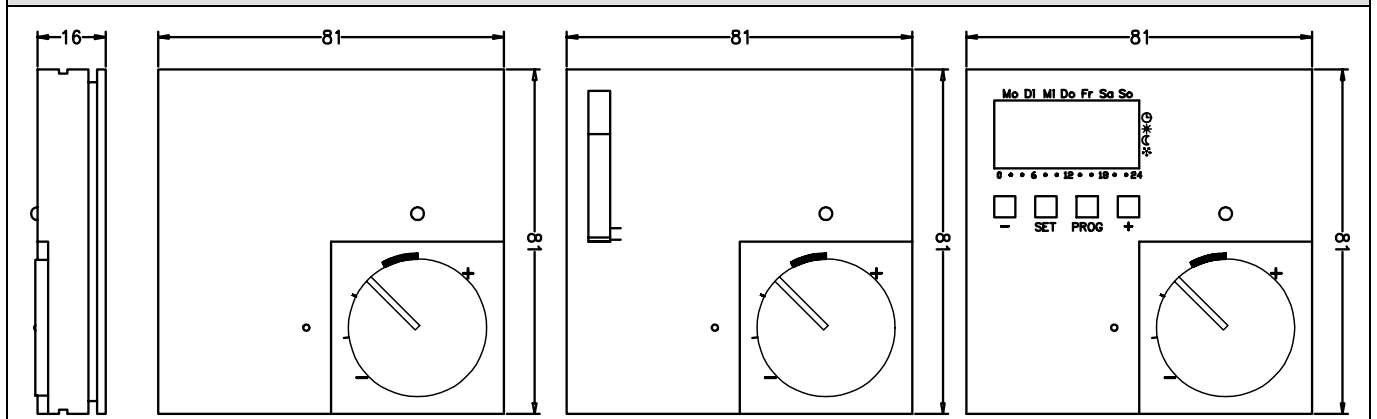
*) Remote sensor FK 133/4 please order separately

At the clock thermostats, the following parameters can be set or displayed



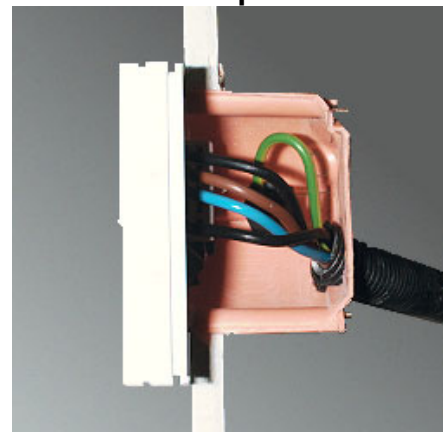
- **Normal display:** desired temperature, actual temperature, time
- **Operating mode:** internal sensor, external sensor or internal sensor with limit function
heating/cooling, currentless open/ closed
- **Operating differential**
- **Activate/deactivate the frost-prevention temperature**
- **Limit temperature:** upper and lower limit value
- **Temperature at the external sensor**
- **Minimum switching duration** in seconds
- **Sensor compensation** to compensate for any building effects
- **Initial heating optimization** on/off
- **Gradient of the initial heating optimization** in minutes per Kelvin
- **Activate/deactivate the daylight saving setting**
- **New - vacation program** – the exactly date is adjustable

Housing Dimensions



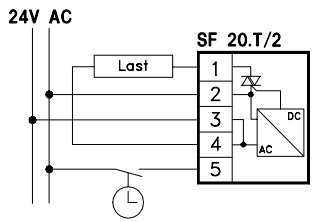
Relay output can be switched over
for currentless open / closed
valve actuators!

ADVANTAGE: much space for connection!

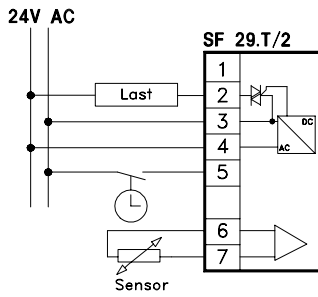


Connection Diagrams

24V Triac

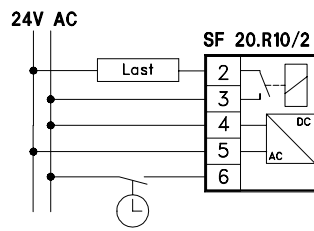


SF 20.T/2 SF 20.T/2.S2
SF 20.T/2.I SF 20.To/2

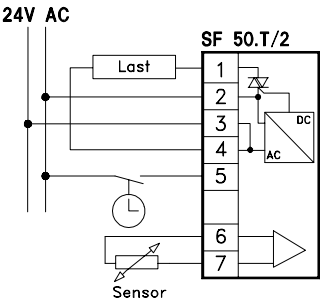


SF 29.T/2

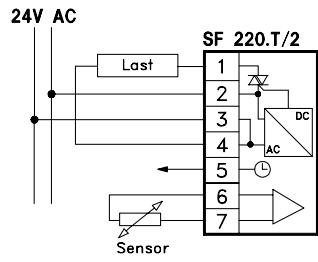
24V Relay



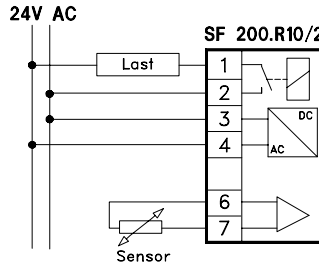
SF 20.R10/2 SF 20.R10/2S.2



SF 50.T/2

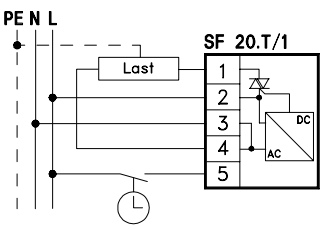


SF 220.T/2

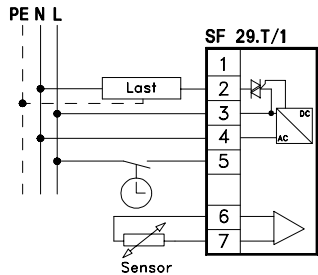


SF 200.R10/2

230V Triac

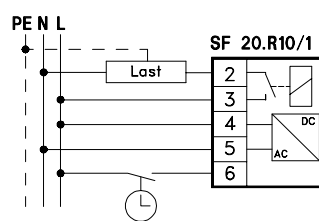


SF 20.T/1 SF 20.T/1.S2
SF 20.T/1.I SF 23.T/1.S2

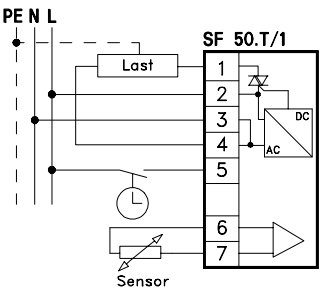
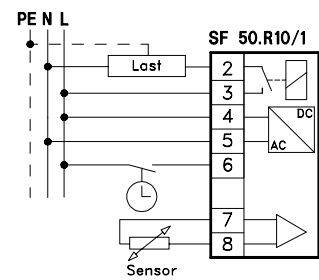


SF 29.T/1

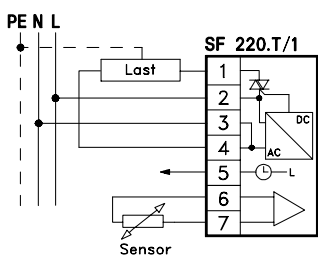
230V Relay



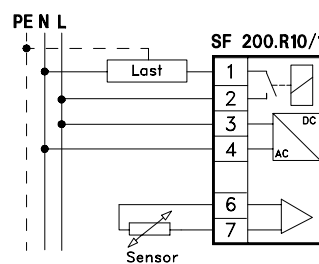
SF 20.R10/1 SF 20.R10/1S.2



SF 50.T/1



SF 220.T/1



SF 200.R10/1

Do you know the complete product range of Stuhl Regelsysteme?